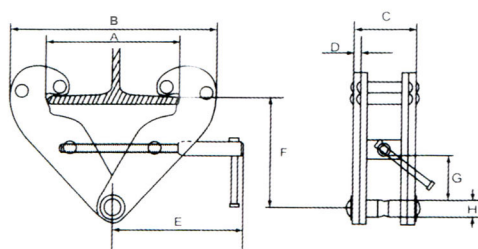


# BEAM CLAMP TBC QUICK INSTALL TROLLEY QIT

**VITALI-INTL®**

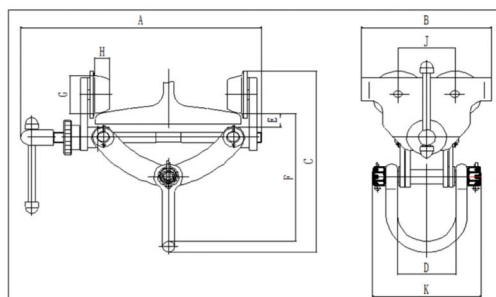
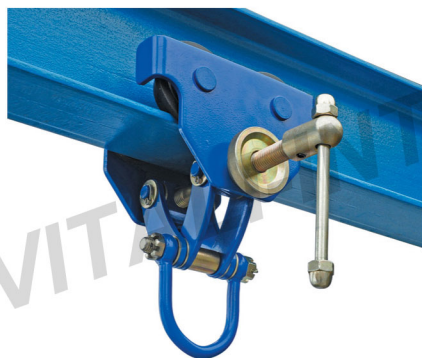
## Beam Clamp TBC



Model No.		TBC-1	TBC-2	TBC-3	TBC-5	TBC-10
Capacity	(tonnes)	1	2	3	5	10
Proof Load	(tonnes)	1.5	3	4.5	7.5	15
I-Beam Width	(mm)	75-220	75-220	80-320	80-320	80-350
Dimensions (mm)	A (max.)	260	260	354	354	400
	B (min.)	180	180	235	235	250
	B (max.)	360	360	490	490	520
	C	64	74	103	110	120
	D	5	6	8	10	12
	E	215	215	260	260	280
	F (max.)	155	155	225	225	230
	F (min.)	102	102	140	140	160
	G	25	25	45	45	70
	H	22	22	24	28	44
Net Weight	(kg)	4.0	4.6	9.1	11.0	14.6
Net Weight *(with shackle)	(kg)	4.5	5.1	9.6	12.0	15.6

\* optional feature: with shackle

## Quick Install Trolley QIT



Model No.		QIT05	QIT10	QIT20	QIT30	QIT50
Capacity	(tonnes)	0.5	1	2	3	5
Proof Load	(tonnes)	0.75	1.5	3	4.5	7.5
I-Beam Width	(mm)	75-130	75-130	75-200	75-200	100-300
Dimensions (mm)	A	240	240	330	355	455
	B	170	174	178	280	346
	C	195-220	258-278	271-315	317-361	440-519
	D	60	80	80	90	110
	E	22	22	22	22	75
	F	120-145	178-198	191-235	199-243	300-379
	G	57	57	57	80	100
	H	20	20	20	24.5	27.5
	J	78	78	78	130	150
	K	110	150	150	210	210
Min. Radius Curve	(m)	0.7	1	1	1.3	1.7
Net Weight	(kg)	4.6	6.2	7.5	18.2	31.8